



2024 TOURING

# GTX™ LIMITED 300

The standard for high-end touring performance.

## KEY FEATURES

- Rotax® 1630 ACE™ – 300
- ST3 Hull™
- Tech Package: BRP Audio – Premium System, full color 7.8" wide display and USB port
- iDF – Intelligent Debris-Free Pump System
- Direct-access front storage
- Limited Package: USB port, watercraft cover, storage bin organizer, knee pads, exclusive coloration and more.



○ NEW White Pearl *Premium*

● Blue Abyss

## CAPACITY

Rider Capacity	○○○
Weight Capacity	272 kg
Fuel Capacity	70 L
Glove Box	2.9 L
Front Bin	96 L
Storage Capacity – Total	98.9 L

## DIMENSIONS

Length (bumper to bumper)	345.1 cm
Width	125.5 cm
Height	114 cm

## HULL

Type	ST3 Hull™
Material	Fiberglass

## OTHER FEATURES

- Ergolock™ two-piece seat with stepped design
- Seat strap
- iBR – Intelligent Brake & Reverse
- VTS™ – Variable Trim System
- Boarding ladder
- RF D.E.S.S.™ key\*\*
- Watertight phone compartment
- LinQ® attachment system
- Knee pads
- Wide-angle mirrors
- Handle grips with palm rest
- Footwell carpets
- Large swim platform
- Tilt steering
- Ski tow eye

## ROTAX® ENGINE

1630 ACE™ – 300

Model	GTX 300
Intake System	Supercharged with external intercooler
Displacement	1,630 cc
Cooling	Closed-Loop Cooling System (CLCS)
Reverse System	Electronic iBR® *
Fuel Type	98 octane
Throttle System	iTC™ (Intelligent Throttle Control)
Exhaust System	D-Sea-Bel™ system

## GAUGE

Type of Gauge	Large panoramic 7.8" wide LCD display	
Main Functions	• BRP Connect	• Clock
	• Music	• VTS™
iTC System – Mode	• Weather	• Fuel consumption
	• Bluetooth <sup>i</sup> connectivity	• Fuel autonomy
	• Speedometer	• Water temperature
	• RPM	• Speed statistics
iTC System – Mode	• Sport mode	• Slow mode
	• ECO® mode	• Speed regulator

## WEIGHT

Dry Weight	385 kg
------------	--------

## WARRANTY

BRP limited warranty covers the watercraft for one year.

\*Electronic brake, neutral and reverse.

\*\*May not be available at time of purchase. Please check with your dealer.





○ NEW White Pearl **Premium**



● Blue Abyss

**FEATURE HIGHLIGHTS**



**Limited Package**

USB port, watercraft cover, storage bin organizer, knee pads, exclusive coloration and more.



**BRP Audio – Premium System**

The industry's first manufacturer-installed truly waterproof Bluetooth<sup>1</sup> audio system.



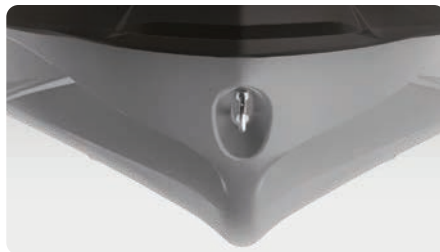
**iDF – Intelligent Debris-Free Pump System**

An innovative, industry-first system that allows you to free your pump of weeds and debris with intuitive handlebar-activated controls.



**Rotax® 1630 ACE™ – 300 Engine**

The powerful Rotax® 1630 ACE™ – 300 engine levels up your performance to your liking by delivering high efficiency and a world-class acceleration.



**ST3 Hull™**

An innovative hull that sets the benchmark for rough water handling, stability and offshore performance.



**Full-Color 7.8" Wide Display**

Full-color display with incredible visibility and a new level of functionality. Bluetooth and smartphone app integration provides music, weather, navigation and more.

©2023 Bombardier Recreational Products Inc., (BRP). All rights reserved. ©, TM and the BRP logo are trademarks of Bombardier Recreational Products Inc. or its affiliates. All product comparisons, industry and market claims refer to new sit-down PWC with 4-stroke engines. Watercraft performance may vary depending on, among other things, general conditions, ambient temperature, altitude, riding ability and rider/passenger weight. Testing of competitive models done under identical conditions. Because of our ongoing commitment to product quality and innovation, BRP reserves the right at any time to discontinue or change specifications, price, design, features, models, or equipment without incurring any obligation. <sup>1</sup>Garmin is a trademark of Garmin Ltd. or its subsidiaries.